



## THE CLIENT

Westcott Shared Facilities – providers of testing and cleanroom rental services. Their technicians are based on site to assist and support client, whether it be vibration testing for a day, renting a cleanroom for a week or undertaking an extended test of their clients' hardware.

## THE BRIEF

Westcott Shared Facilities plan to create a bespoke suite of cleanrooms to be used as rentable spaces at Westcott Venture Park in Aylesbury. The client required three cleanrooms that met ISO7 standards for particle cleanliness and ECSS standards for temperature ( $21 \pm 2^{\circ}\text{C}$ ) and humidity ( $55 \pm 10\%$ ). The cleanrooms had to be silicone free from the ground up and fitted with vinyl flooring throughout, with access control and frosted windows to ensure user privacy.



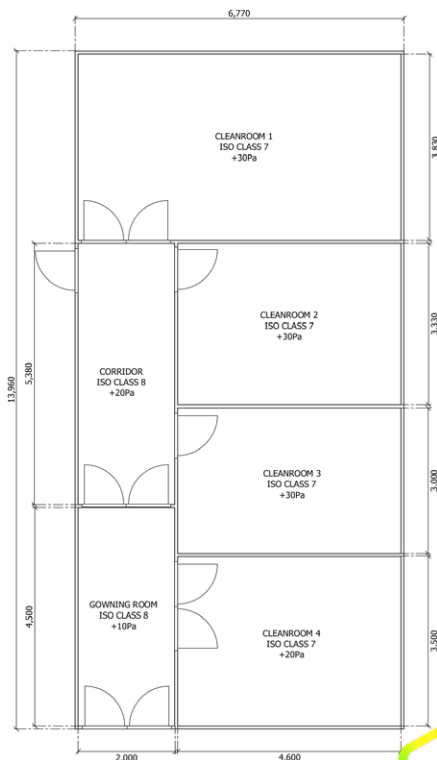
Aerospace & Space



21+/-2C  
55-10% RH



90m<sup>2</sup>



**“A fantastic cleanroom on time and on budget..”**

Guardtech Cleanrooms Project Manager Florence Whitehead said: “Whilst this was a fairly routine modular cleanroom installation for a team as experienced as ours, it nevertheless was given the same care, attention and commitment as any Guardtech project.

“As a result, the team produced a fantastic three-suite controlled environment that delivered the brief on time and on budget for an excellent client.”

**Florence Whitehead**  
Guardtech Group  
Project Manager



# SPACE RENTAL SUITES



## THE TECH SPECS

*A controlled environment designed, installed, cleaned and commissioned by Guardtech built to the following specification:*

◆ **Structural:** GT Shell Lite wall panel system, Integrated hollow core and low-level air return grille for transit back to duct spigot, GT Lid Plus ceiling panel system, GT Deck Plus vinyl flooring system – isolated section in CR4 preserved, GT Access Plus single and double doors.

◆ **Mechanical:** GT Air Plus downflow air handling unit (AHU) with G4 pre-filters, frost heating coils, variable speed fan, cooling coils and reheat, GT Flow Pro H14 HEPA fan filter units (FFUs) with gel seal and roomside change.

◆ **Electrical:** GT Lux Pro LED lighting flush-mounted in ceiling panels, 13amp sockets and double sockets wired back to distribu-

tion boards, 3-compartment curved profile trunking around room perimeter and columns, doors on electro-magnetic interlock system.

◆ **Environmental Monitoring:** GT Scan Plus environmental monitoring system (EMS) with digital touchscreen displays and alarms, temperature, humidity & pressure probes feeding back to display. Ahu controller digital display on ahu for setting target temperature & humidity.

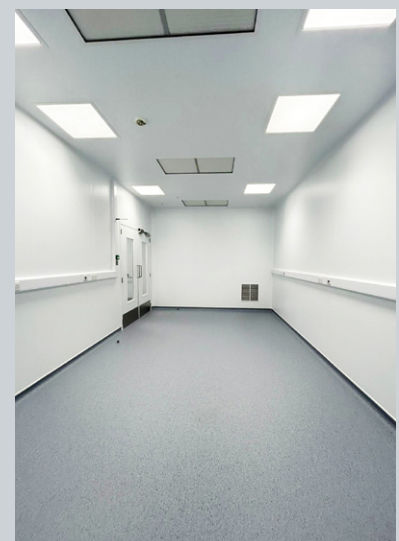
## THE CHALLENGES

Whilst this was a relatively straightforward modular cleanroom installation for the experienced Guardtech Cleanrooms team, they still worked as diligently as ever to produce an excellent three-suite facility on time and on budget in a professional and considerate manner

◆ **Good vibrations:** Part of the client's offering was set to be vibration testing services – and so the cleanroom had to be designed and installed in an intelligently positioned manner to accommodate a 30kN electrodynamic shaker pad, utilised for testing satellites and

Aerospace components. Whilst this was an unusual requirement, the team worked well with the client to deliver the ISO7 cleanroom around this vital piece of expensive hardware.

◆ **Live site:** Because the modular cleanroom was being situated in a new building that was a live construction site, we had to be expertly diligent when it came to moving materials in and out of the facility to ensure our process went smoothly and didn't interrupt the fellow contractors on site.



# SPACE RENTAL SUITES

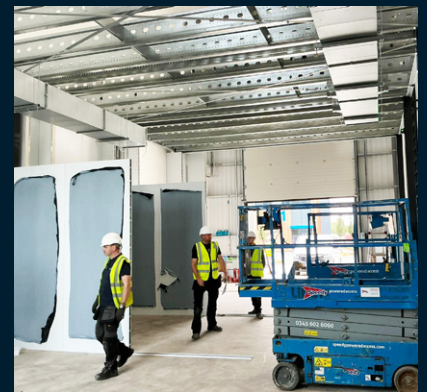


📍 Guardtech House  
Unit 1A Homefield Road,  
Haverhill, CB9 8QP

☎ 0330 113 0303

✉ sales@guardtech.com

🖱 www.guardtechgroup.com



## THE RESULT

Guardtech Cleanrooms  
Project Manager Florence  
Whitehead said: "Whilst this

was a fairly routine modular  
cleanroom installation for  
a team as experienced as  
ours, it nevertheless was  
given the same care, atten-  
tion and commitment as any

Guardtech project.

"As a result, the team pro-  
duced a fantastic three-suite  
controlled environment that de-  
livered the brief on time and on  
budget for an excellent client."

