



GT SCAN



TECHNICAL DATA SHEETS



www.guardtech.com



0330 113 0303



sales@guardtech.com



Guardtech House, Unit 1A Homefield Road, Haverhill, Suffolk, CB9 8QP



DIRECTORY



Introduction **pg 4**



GT Scan Max **pg 6**



GT Scan Pro **pg 8**



GT Scan Plus **pg 10**



GT Scan Lite **pg 12**



Comparisons **pg 14**



GT SCAN

ENVIRONMENTAL MONITORING



Guardtech offer a range of environmental monitoring system (EMS) solutions to best suit the needs of your application. Whether it's budget, lead time or performance that matters most, Guardtech provide a comprehensive choice of rapid rise door options to ensure your process requirements are achieved.

Whether it's a more basic analogue Magnehelic differential pressure gauge you need, all the way up to a comprehensive large-scale 21CFR Part 11 compliant monitoring system, Guardtech Group's Directors, Design Engineers and Installation team have worked together to carefully select four industry-leading ceiling options for your consideration.

Read on to discover the benefits and compromises of the different choices we have, then use this guide to make the most informed EMS choice possible.

Let Guardtech take your operation to the next level.



SCAN MAX

GT Scan Max is our elite-level EMS – a 21CFR Part 11 compliant system combining state-of-the-art software and hardware to provide accurate readings for temperature, humidity, differential pressure and more.



SCAN PRO

GT Scan Pro is a flush-mounted multifunction pressure transmitter that can display up to three critical atmospheric parameters simultaneously and utilises a 21 CFR Part 11 data acquisition-compliant software.



SCAN PLUS

Wall-mounted transmitter with user-friendly touchscreen display in robust, attractive plastic housing. Multifunction sensors featuring interchangeable probes that can display and measure parameters simultaneously.



SCAN LITE

Guardtech's entry-level environmental monitoring system – a versatile analogue Magnehelic differential pressure gauge that indicates positive, negative or differential, accurate to within 1%.



SCAN FIRE

This product range does not currently include a Fire Rated solution. Please consult a Guardtech rep for more information on your fire safety options.





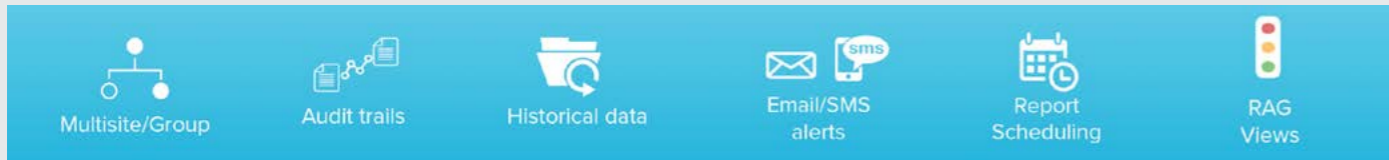
GT SCAN MAX



GT Scan Max is our elite-level EMS – a 21CFR Part 11 compliant system combining state-of-the-art software and hardware to provide accurate readings for temperature, humidity, differential pressure and more.

GT Scan Max is an environmental monitoring system (EMS) that is used with Pro and IceSpy hardware to provide a secure and flexible tool for comprehensive data collection, analysis and immediate alarm notification.

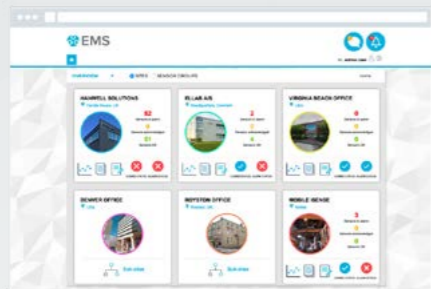
GT Scan Max boasts a user-friendly contemporary browser-based interface which enables data from the hardware to be seamlessly fed into one system, providing an industry-leading software and hardware combination.



PRODUCT FEATURES

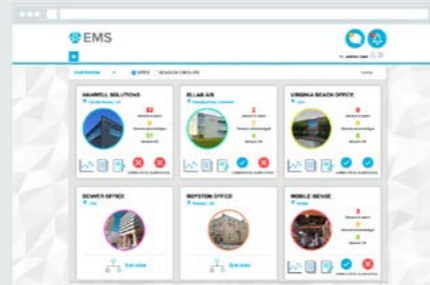
OVERVIEW

Overview provides users with an overview of overall system status, while the dashboard can be customised per user.



TABULAR VIEW

Tabular View provides list of sensors with clear indication of alarm, battery status and live data.



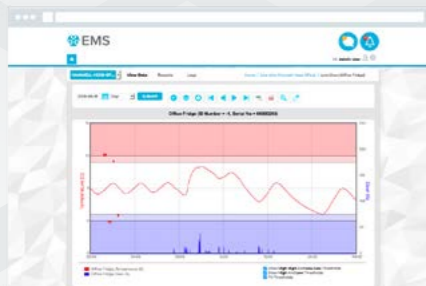
PLAN VIEW

Plan View provides visual indication of sensor location within a facility. Sensor icons show real-time data and alarms and interaction.



GRAPHICAL VIEW

Graphical View provides line graphs with optional door position indicator, alarm level indication. Data overlays, zoom plus many more features.



GT SCAN MAX MEASUREMENTS

Temperature – Carbon Dioxide – Differential Pressure – LUX – Relative Humidity

VALIDATABLE SOFTWARE

Specifically for the Pharmaceutical sectors, we provide comprehensive IQ and OQ protocols and custom protocols, where required. Trained engineers and distributors are available for

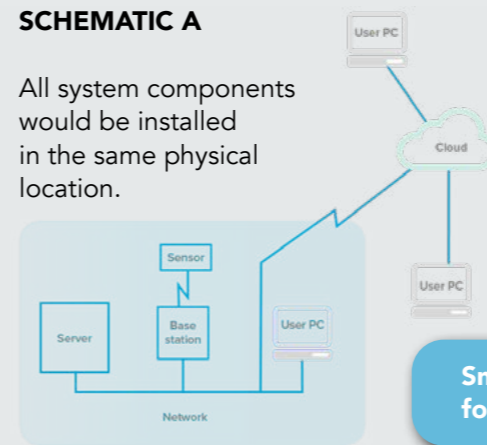
smooth validation protocol execution.

EMS assists with national regulatory compliance requirements: GxP Guidelines, HACCP, FDA 21 CFR Part 11, EU GMP Annex 11, and ISO 22000 food standards.

Deploy the system in a single or multiple geographic locations

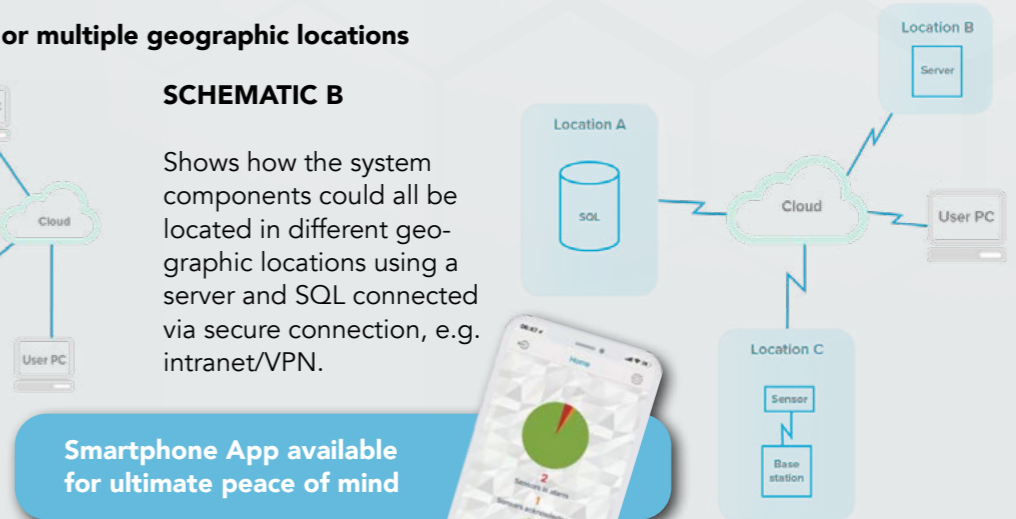
SCHEMATIC A

All system components would be installed in the same physical location.



SCHEMATIC B

Shows how the system components could all be located in different geographic locations using a server and SQL connected via secure connection, e.g. intranet/VPN.



Smartphone App available for ultimate peace of mind

BENEFITS

- 21CFR Part 11 compliant system
- Measurements and data provided for a comprehensive range of critical cleanroom parameters
- Immediate alarm notification for superior safety
- Smartphone app
- Sophisticated, industry-leading software

COMPROMISES

- Significantly more expensive than all the other options, particularly Plus and Lite
- Requires on-going maintenance from Guardtech or associated engineers

APPLICATIONS



GT Scan Max suits the most demanding of applications, typically where particulate needs to be controlled to extremely tight tolerances, including rooms required to comply with cGMP conditions outlined in EU GMP Annex 1 and ISO 14644-1.



GT SCAN PRO



GT Scan Pro is a flush-mounted multifunction pressure transmitter that can display up to three critical atmospheric parameters simultaneously and utilises a 21 CFR Part 11 data acquisition-compliant software.

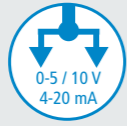
GT Scan Pro is a state-of-the-art wall-mounted panel transmitter that can simultaneously display three parameters including temperature, humidity, air velocity, pressure, atmospheric pressure, CO and CO2 levels, air quality and air flow readings.

This sleek, flush-mounted solution is designed to have minimal impact on

the internal layout of your cleanroom. Its front face is made of a high-grade stainless-steel with an integrated waterproof touchscreen. Equipped with the same technologies as GT Scan Plus, this panel-mounted version provides high reliability and accuracy. In addition, measurements can be recorded and downloaded via intelligent software.



IP66 VHP resistant 316L stainless steel front



3 configurable analog outputs
0-5 / 10 V
4-20 mA



1 x input for external probe



3 visual and audible alarms

Available versions: Optional wireless communication module
Integrated wireless communication module

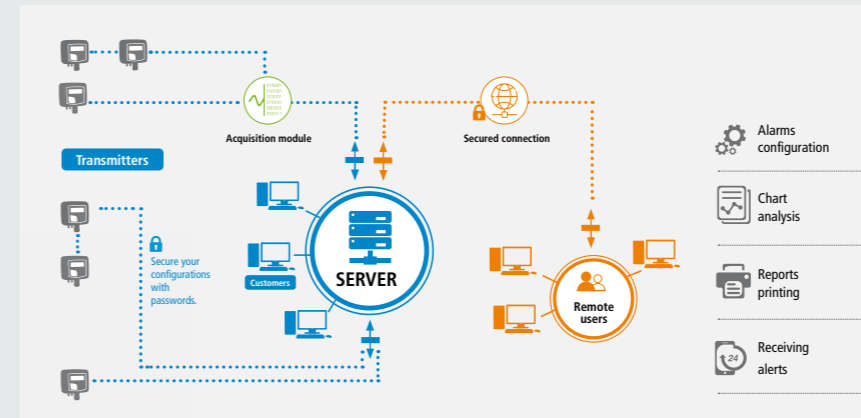
TECHNICAL FEATURES

TECHNICAL DETAILS	
Analogue outputs	3
Wireless communication module	Option
Ethernet Module	N/A
MODBUS Protocol	Yes
Relays	N/A
Visual and audible alarm	3
Type of probes	Interchangeable (not fixed)
Material	Stainless steel

TECHNICAL DETAILS	
Tightness according to model	IP66
VHP* resistant	Yes
PC Software	Sauermann Control
Mobile App	Sauermann Control
Mounting	Flush mount
Safety	The on-board menu is secured with an access code.
Standards	All sensors meet CE standard and EMC requirements

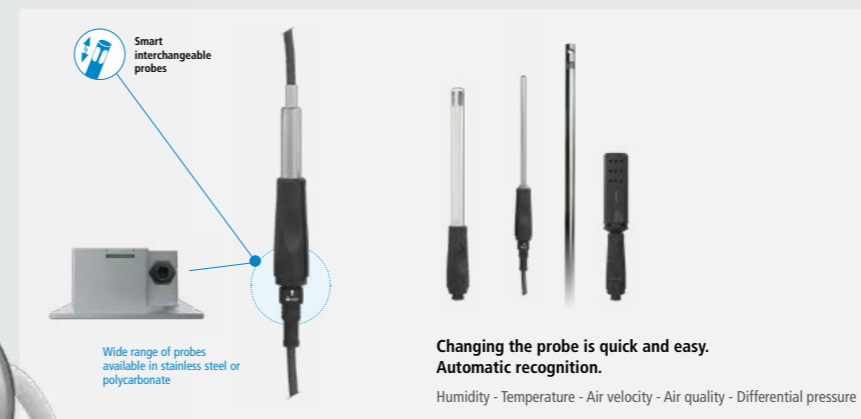


MONITORING SYSTEM



GT Scan Pro offers a state-of-the-art software solution for data acquisition environment monitoring. The measurements collected from the transmitters are compliant with FDA 21 CFR Part 11.

HIGH ACCURACY PROBES



GT Scan Pro can be controlled and configured with a computer, smartphone or tablet via an app, allowing the user to manage all the device's parameters via its wireless connection module.

BENEFITS

- Measurements and data provided for an comprehensive range of critical parameters
- Reliable, user-friendly, flush-mounted transmitter hardware
- Utilises a reliable, intelligent software
- Smartphone app provides full device control

COMPROMISES

- Significantly more expensive than GT Scan Lite option
- Requires on-going maintenance from Guardtech or associated engineers
- Measurement options not as wide ranging as GT Scan Max

APPLICATIONS



GT Scan Pro Environmental Monitoring System (EMS) is suitable for a wide variety of applications in a diverse range of sectors. Whilst it may not provide as comprehensive a range of measurements as GT Access Max, this solution remains a high-performance EMS option for the full range of ISO classifications.



GT SCAN PLUS



Wall-mounted transmitter with user-friendly touchscreen display in robust, attractive plastic housing. Multifunction sensors featuring interchangeable probes that can display and measure parameters simultaneously.

GT Scan Plus provides differential pressure, hygrometry, temperature, air velocity, air-flow, air quality and Volatile organic compounds (VOC) readings.

For cleanrooms where highly accurate regulation and monitoring of the air parameters is required, GT Scan Plus transmitters provide reliable measurements and allow you to achieve compliance with the strictest standards.

The GT Scan Plus housing is waterproof, rugged and resistant to vaporised hydrogen peroxide (VHP). It also fea-

tures a colour touchscreen for comprehensive viewing and advanced control of measurement parameters.

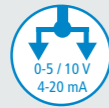
In addition, measurements can be recorded and downloaded via an intelligent software solution.



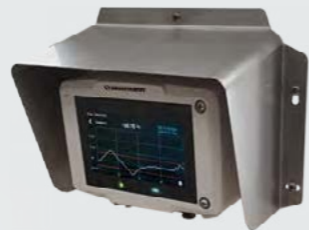
2 inputs for interchangeable probes



4 visual and audible alarms



4 configurable analog outputs



External protection against solar radiation and rain fall

TECHNICAL FEATURES

TECHNICAL DETAILS

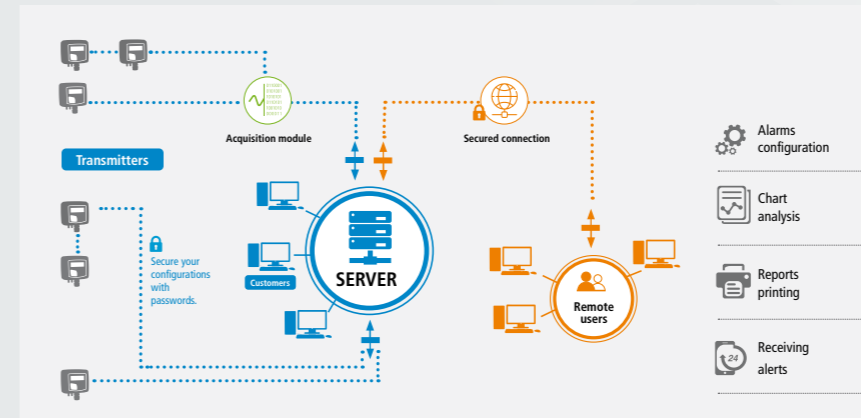
Analogue outputs	4
Wireless communication module	Option
Ethernet Module	N/A
MODBUS Protocol	Yes
Relays	4 (optional)
Visual and audible alarm	4
Type of probes	Interchangeable (not fixed)
Material	ABS (thermoplastic polymer)

TECHNICAL DETAILS

Tightness according to model	IP66
VHP* resistant	Yes
PC Software	Sauermann Control
Mobile App	Sauermann Control
Mounting	On wallmounting plate
Safety	The on-board menu is secured with an access code.
Standards	All sensors meet CE standard and EMC requirements

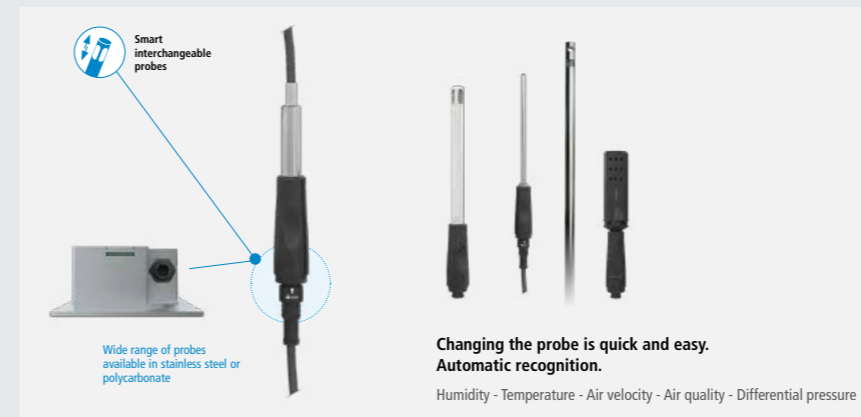


MONITORING SYSTEM



GT Scan Plus offers a state-of-the-art software solution for data acquisition environment monitoring. The measurements collected from the transmitters are compliant with FDA 21 CFR Part 11.

HIGH ACCURACY PROBES



GT Scan Plus can be controlled and configured with a computer, smartphone or tablet via an app, allowing the user to manage all the device's parameters via its wireless connection module.

BENEFITS

- Measurements and data provided for a decent range of critical cleanroom parameters
- Robust hardware that copes well with the rigours of deep cleans
- Interchangeable probes that can display and measure parameters simultaneously

COMPROMISES

- Not a flush-mounted solution
- Far more expensive than GT Scan Lite
- Less detailed data collection than GT Max option

APPLICATIONS



GT Scan Plus is a versatile EMS solution suitable for a significant number of different industries using controlled environments as part of their process. GT Scan Plus is ideal for controlled environments where the option for flush-mounted transmitters is in some way compromised.



QUICK-LOOK COMPARISON GUIDE

FEATURES



FEATURES	MAX	PRO	PLUS	LITE
Fully 21CFR Part 11 compliant	<input checked="" type="checkbox"/>	<input type="checkbox"/>	<input type="checkbox"/>	<input type="checkbox"/>
Temperature & humidity measurements	<input checked="" type="checkbox"/>	<input checked="" type="checkbox"/>	<input checked="" type="checkbox"/>	<input type="checkbox"/>
Differential pressure readings	<input checked="" type="checkbox"/>	<input checked="" type="checkbox"/>	<input checked="" type="checkbox"/>	<input checked="" type="checkbox"/>
Supported by computer software	<input checked="" type="checkbox"/>	<input checked="" type="checkbox"/>	<input checked="" type="checkbox"/>	<input type="checkbox"/>
Suitable for GMP environments	<input checked="" type="checkbox"/>	<input checked="" type="checkbox"/>	<input checked="" type="checkbox"/>	<input type="checkbox"/>
Digital interfaces	<input checked="" type="checkbox"/>	<input checked="" type="checkbox"/>	<input checked="" type="checkbox"/>	<input type="checkbox"/>
Air velocity & airflow measurements	<input checked="" type="checkbox"/>	<input checked="" type="checkbox"/>	<input checked="" type="checkbox"/>	<input type="checkbox"/>
Carbon monoxide & carbon dioxide data	<input checked="" type="checkbox"/>	<input checked="" type="checkbox"/>	<input checked="" type="checkbox"/>	<input type="checkbox"/>
Atmospheric pressure readings	<input checked="" type="checkbox"/>	<input checked="" type="checkbox"/>	<input checked="" type="checkbox"/>	<input type="checkbox"/>
Weatherproof solution	<input type="checkbox"/>	<input type="checkbox"/>	<input type="checkbox"/>	<input checked="" type="checkbox"/>
Smartphone app	<input checked="" type="checkbox"/>	<input checked="" type="checkbox"/>	<input checked="" type="checkbox"/>	<input type="checkbox"/>





Guardtech

group

www.guardtech.com

Guardtech House,
Unit 1A Homefield Road,
Haverhill, Suffolk,
CB9 8QP