



## THE CLIENT

A worldwide supplier of technologies and services supporting the development, manufacture and delivery of therapeutics.



Research & Development



20+/-2C – 50+/-10% RH



60m<sup>2</sup>

## THE BRIEF

The Guardtech Group Service Department were tasked with conducting a full Validation on a CleanCube Maxi portable cleanroom, including testing of: Air Change Rates, Pres-

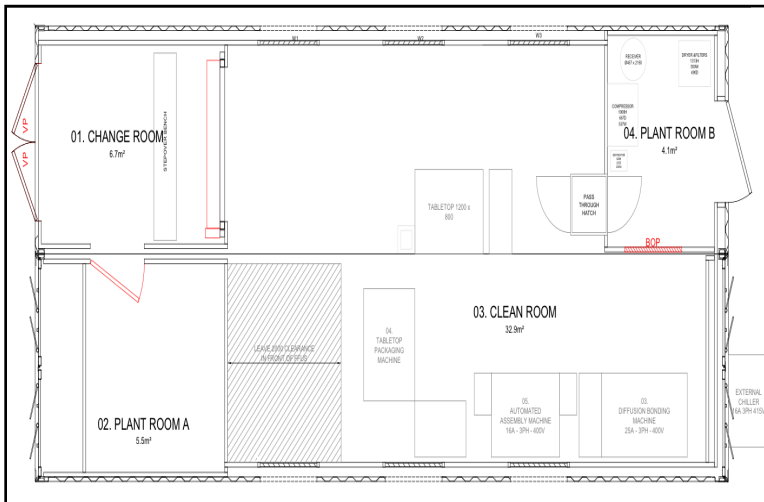
sure Differential, Installed Filter Integrity Leaks, Airflow Visualization and Cleanliness Recovery, as well as measurements of Particulate Count, Lighting, Temperature, Humidity and Sound levels, plus Door Interlock and Disaster Recovery testing.

**“A routine Validation to our usual high standards”**

Guardtech Group Compliance Manager Chris McGinn said: “This was a fairly routine Guardtech Group Validation as part of an overall Operational Qualification for a bespoke CleanCube Mobile Cleanroom ‘double 40ft container’ for Research & Development work.

“Our team of Service Engineers and supporting staff work to the highest standards and therefore treated this Validation with the same diligence and attention to detail that set us out as the go-to source for high-quality post-cleanroom construction services.”

**Chris McGinn**  
Guardtech Group  
Compliance Manager





## THE PROCESS

All testing was conducted in accordance with ISO 14644-3:2019

**Air Change Rate Testing:** Guardtech Validation Engineers took Airflow Volume readings at supply inlets using a Vane Anemometer set to read meters per second. The readings were taken approximately 150mm from the filter face. The Anemometer was held for at least 30 seconds or until a steady reading was displayed in five locations on the filter faces. The average of the five locations was then taken and used to calculate the Air Change Rate Per Hour (ACPH). The calculated ACPH was greater than the minimum required ACPH and therefore the Air Change Rate testing was passed.

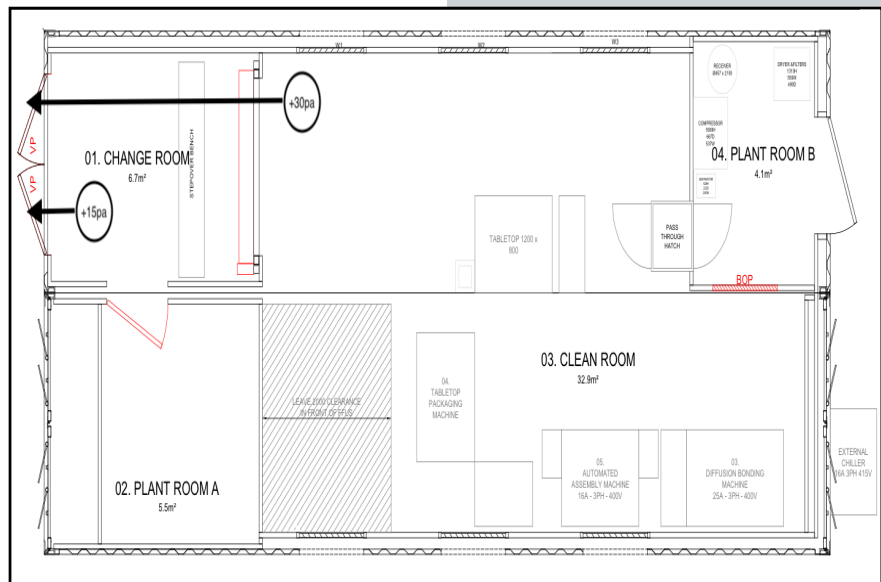
**Pressure Differential Testing:** Using a Calibrated Pressure Gauge, the Guardtech team measured the Pressure Differential in the specified zones shown on the diagram (right) by running a tube between the rooms. Each reading was then recorded once a steady result was obtained. All relevant equipment and plant associated with the cleanroom, such as the Air Handling Unit and extract systems, had to be operational, while

all relevant doors were closed. The recorded Pressure Differentials satisfied the requirements set out in our results table and a pass was recorded.

**Installed Filter Integrity Leak Testing:** Using an Aerosol Generator capable of generating particulate in the range of 0.1µm-0.3µm, the Guardtech Group Validation team injected aerosol into the AHU system upstream from the filter to be tested.

The generator was filled with an appropriate oil and an aerosol photometer was set to detect it, therefore presenting information on any potential leaks greater than 0.01% of the upstream concentration. All output alarms were set to be activated. Using the calibrated aerosol photometer, the Filter face, gasket and housing was scanned to determine if any leaks were present (scan speed of 5cm per second) at a distance of no greater than 3cm from the filter

Figure 4 – Pressure Measurement Locations (plan view)







location was sampled for one minute in accordance with ISO 14644-1:2015 Annex 4.4. Engineers set the flow rate to 50 Lmin-1 and the units of measurement set to m3. The particle counter was set to measure for 0.5 and 5µm-sized particulate. The highest recorded particulate counts were recorded in the test results table, where a pass or fail would thus be determined against the Grade/Class determined in accordance with ISO14644-1:2015 section 4.3. Later, the Complete Raw Data was appended, detailing all test location results. Each reading from all locations was below the maximum permissible value for the Classification as stated in the results table and so the test was deemed to have been passed.

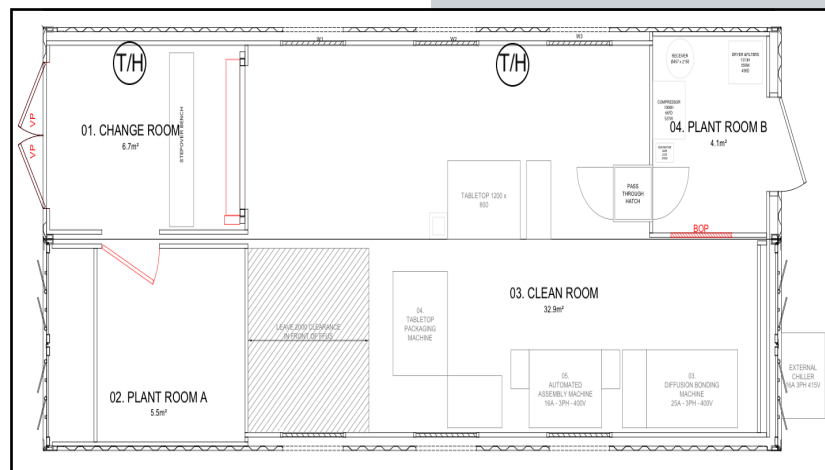
**Lighting Levels:** Measurements of the lighting level were carried out in each room at bench (working) height in several of the positions where equipment or an operator will potentially be sited using a calibrated Luxmeter. Each measurement was recorded and the average of each room was then calculated. All average readings satisfied the minimum lux level requirements and so the CleanCube's lighting level readings achieved a pass.

**Temperature Levels:** The temperature was measured at a minimum of one location for each temperature-con-

trolled zone (see diagram below). Each sensor was placed at a designated location at work-level height using a calibrated Temperature Sensor. After sufficient time was allowed for the sensor to stabilise, the Guardtech Engineers recorded temperature readings at each location. Measurements were performed as appropriate for the purpose of the application and the measurement time was at least five minutes, with one value recorded at least every minute. The average temperature reading from each room was above the minimum permissible temperature value and so a pass was recorded.

**Humidity Levels:** The humidity was measured at a minimum of one location for each humidity-controlled zone. Each sensor was placed at the designated location at work-level height using a calibrated humidity sensor. After sufficient time was allowed for the sensor to stabilise, the humidity reading at each location was recorded. Measurements were performed as appropriate for the purpose of the application and the measurement time was at least five minutes, with one value recorded at least every minute. The average reading from each room was above the minimum permissible humidity value and so the CleanCube was deemed to have passed.

Figure 11 – Humidity Monitoring positions at bench height (plan view)



# VALIDATION CASE STUDY

Contact Us



Unit C The Brocks,  
Homefield Rd,  
Haverhill, CB9 8QP

0330 113 0303

sales@guardtech.com

www.guardtechgroup.com



**Sound Levels:** Measurements of the Sound levels were carried out in the centre of each room at bench (working) height by Validation Engineers using a calibrated Sound Meter. Each reading, from the locations on the diagram below, had to be below the maximum permissible value as stated in our results table. Once this was achieved, a pass was awarded.

**Door Interlock Testing:** The Guardtech team were tasked with ensuring all interlocked room doors were fully operational. Using our Matrix result tables, Engineers were required to open each door, and check the other referenced interlocked door to ensure the interlock has engaged. The process was then repeated for all remaining interlocked doors. With the Door Under Test 'open', the Interlocked Door had to interlock/not open. All doors operated correctly and the test was deemed a pass.

**Disaster Recovery testing:** With the room completely set up and commissioned, Validation Engineers were required to record the room pressure differentials as part of a Disaster Recovery Test. Engineers turned the power off in the cleanroom facility for a period of five minutes,

then switched the power back on and allowed the cleanroom facility to become fully operational. They then recorded the pressure differentials at one minute, five minutes and at 10 minutes following the switch-on for each EMS gauge. The room pressure differentials returned to their commissioned set point following the reinstatement of the power and the test was deemed a pass.

was a fairly routine Guardtech Group Validation as part of an overall Operational Qualification for a bespoke CleanCube Mobile Cleanroom 'double 40ft container' for Research & Development work. "Our diligent and thorough team of Service Engineers and supporting staff work to the highest standards and therefore treated this Validation with the same diligence and attention to detail that set us out as the go-to source for high-quality post-cleanroom construction services."

## THE RESULT

Guardtech Group Compliance Manager Chris McGinn said: "This

Figure 12 – Sound Level Monitoring positions at bench height (plan view)

