



THE CLIENT

Reliance Precision – providers of custom-built, high reliability, precision instrumentation to customers from a diverse range of global markets. Their engineering capabilities include design, development, prototyping, manufacturing, assembly and test, complemented by a catalogue of precision motion control components and electro-mechanical assemblies.



Precision Engineering



**22C +/- 3
50% +/- 10%**

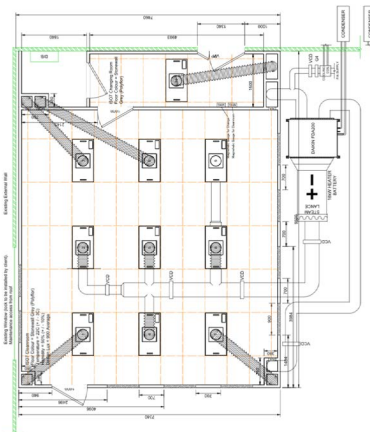


70m²



THE BRIEF

Guardtech Cleanrooms were commissioned to design and build a 70sqm ISO7 controlled environment to support the processing element of Reliance Precision's operation – packaging and sealing their precision-engineered parts for delivery to clients.



“The team applied our usual high standards...”

Guardtech Group Modular Cleanrooms Project Manager Engineer Elliott Pearce said: “This was a fairly straightforward modular build, but the team applied the same high standards to it as they would with any Guardtech Group project. “It was a real pleasure working with such a helpful client and it's a real badge of honour for us to support the really impressive work they do.”

Elliott Pearce
Project Manager



RELIANCE
PRECISION



Guardtech
cleanrooms

PACKAGING MODULAR

Contact Us



Unit C The Brocks,
Homefield Rd,
Haverhill, CB9 8QP

0330 113 0303

sales@guardtech.com

www.guardtechgroup.com



THE TECH SPECS

A controlled environment designed, installed, cleaned and commissioned by Guardtech built to the following specification:

- ◆ **Structural:** GT Shell Plus PIR wall panels, GT Deck Plus ESD Vinyl capped & coved, GT Access Plus GRP cleanroom doors, GT Access Fire.
- ◆ **Electrical:** 20 x 13-amp double sockets in PVC trunking. Electromagnetic interlock doors. GT Lux Pro lighting providing 900 lux average at bench level.
- ◆ **Mechanical:** GT Flow Plus H14 HEPA and G4 Fan Filter Units.

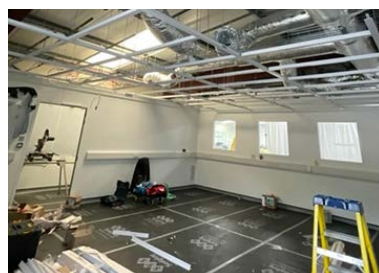
THE CHALLENGES

As a smaller-scale modular cleanroom project, this build presented the team

with very few challenges and issues to tackle. There were, however, some issues presented by a challenging lighting requirement and access to the building area.

Lighting: Because of the nature of their precision manufacturing work, the client required 900 lux lighting at bench level. Sourcing lights bright enough to achieve such a high lux whilst also delivering the desired colour warmth (as close to daylight as possible) was tricky, but the Guardtech team managed to find a solution.

Access: The build took place on the second floor of the facility, which presented the Install team with a series of challenges. There was a very small goods lift, but all larger materials – including doors



and wall panels – had to be carried upstairs by hand. The Guardtech Cleanrooms team rolled their sleeves up, literally and metaphorically, and took great care to ensure the high standards of the facility were maintained throughout the construction.

THE RESULT

Guardtech Group Modular Cleanrooms Project Manager Engineer Elliott Pearce said: "This was a fairly straightforward modular build, but the team applied the same high standards to it as they would with any Guardtech Group project. "It was a real pleasure working with such a helpful client and it's a real badge of honour for us to support the really impressive work they do."

